



HAMMOND ORGAN

MUSIC'S MOST GLORIOUS VOICE



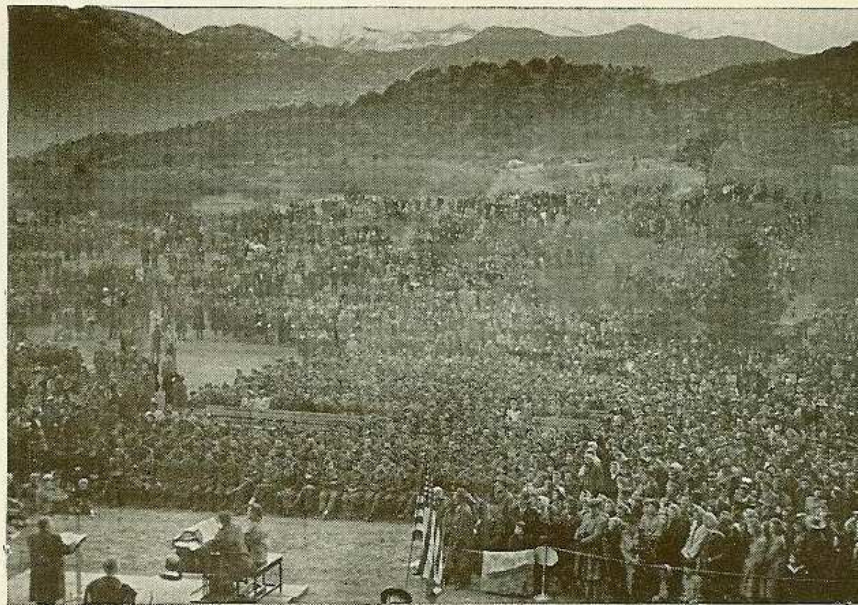
(Left) Interior view of beautiful Canterbury Cathedral, England, where the Hammond Organ has been in use for ten years. Although this famous cathedral has an historic pipe organ, only the Hammond Organ can provide adequate organ music for the entire nave of the immense edifice, which seats more than 4,000 people; therefore the Hammond Organ is used for all general services.



(Above) The Hammond Organ which was used during a solemn High Mass celebrated by His Holiness, Pope Pius XII and attended by over 250,000 participants in St. Peter's Square, Rome.



(Left) The Hammond Organ has received the enthusiastic praise of many of the most eminent musicians in the world. "The Hammond Organ is a beautiful instrument and an absolute delight for anyone who loves music," says Pierre Monteux, Conductor, San Francisco Symphony Orchestra. Here is Mr. Monteux playing the Hammond Organ which he bought two years ago for his church; he also has one for his own use.



Hundreds of leading schools and colleges are using the Hammond Organ both for teaching and to provide music for many events. Availability of Hammond Organ instruction is a tremendous attraction for students. (Below) Technical H. S., Springfield, Mass.

(Above) Only the Hammond Organ can provide beautiful, cathedral-rich organ music out-of-doors, as it does at the annual Easter Sunrise service in the vast Garden of the Gods, Colorado Springs, Colo.

(Below) Leading morticians find the Hammond Organ ideal; as used in the Lupton & Sons Chapel, St. Louis.



THE HAMMOND ORGAN

ORGAN music is perhaps the most beloved of all music. The Hammond Organ is the culmination of an ideal—that of placing fine organ music within the reach of virtually everyone, not only the largest churches but the smallest, not only sumptuous homes but modest dwellings, wherever lovely music is desired. This the Hammond Organ does because of many features unique to this organ alone. It is compact, easily transported. It is so designed that volume manufacturing reduces costs to a minimum, and at the same time it retains the vast tonal range that is the organ's principal characteristic and appeal.

Speaking of the Hammond Organ, the eminent Dr. Walter Damrosch said: "To think that electricity can be so chained to the idea and hands of men as to reproduce an organ in all its finest and most intimate details, and what is still more, to do this in such a way that today the smallest church in America can have it!"

The success of the Hammond Organ has been phenomenal. Since its introduction in April, 1935, it has maintained outstanding world-wide leadership—the largest-selling organ in the world. Organ music no longer is a privilege of just a few. Playing the glorious music of the organ—once confined to scattered professional musicians who had instruments available—has become a life-enriching hobby for the amateur musician. Today the Hammond Organ is used in thousands of churches of every denomination; thousands more are in homes, in schools, in mortuaries and in many other places ranging from battleships to tiny chapels in far-off tropical islands.

A Superb Musical Instrument

The tremendous acceptance of the Hammond Organ has come about only because it has combined superb musical quality with amazing utility. Its beauty of tone, remarkable range and flexibility have been praised enthusiastically by the world's leading musicians. At the Hammond console all the lovely familiar voices of the organ—strings, reeds, woodwinds, diapasons—are at instant command. Its breadth of dynamic control, far more than that of other instruments, is the most effective known to music. And the response of the Hammond Organ is instantaneous—there is no lagging of tone after a key is pressed. The fastest-moving music, which was formerly impractical for the organ, is played easily on the Hammond Organ.

The Magic of Electricity

Such exclusive features are possible because the Hammond Organ actually generates its tones electrically, employing a principle of tone generation not used in any other instrument. It does not merely amplify mechanical sounds. It uses no strings, pipes, reeds or any other mechanical sounding device.

Once accomplished, the principle is simple enough. In the Hammond Organ, the tones first are generated as electric waves, then are translated into sound waves. Visualize a small disc the size of a silver dollar, with "teeth" somewhat like a gear. The disk revolves at a constant speed so that the teeth or high spots pass a coil-wound permanent magnet, inducing a tiny electric current in the coil. If, for example, the high spots pass the magnet at the rate of 440 per second, when this current is amplified into sound it is a pure tone with a frequency of 440 vibrations per second. This is the note "middle A" on the international scale. There is a separate disc or "tone wheel" for each musical frequency in the full range from the lowest to the highest note on the Hammond Organ.

Because these tone wheels are all driven at a constant speed by a synchronous motor, the Hammond Organ is always in tune.

The Harmonic Draw Bars

But what we have described are *fundamental* tones—whereas any complex musical tone is made up of the fundamental plus harmonics, or over- and undertones. Here then is the amazing feature of the Hammond Organ: taking one tone as the fundamental, as many as eight other tones may be mixed with it in varying degrees of relative strength. These become the harmonics. And so variable are the many ways they may be combined that the player easily may create almost any shade of tone he desires.

This is the Hammond harmonic drawbar system, which has been heralded as the greatest contribution to music in a century. This is the reason for the Hammond Organ's vast range of tones—dignified and churchly or sparkling and vivacious at will. With the Hammond Organ's wealth of resources at his command, the player mixes his tone colors as the painter mixes colors on his palette.

SOME OUTSTANDING FEATURES OF THE HAMMOND ORGAN

A Complete Organ

The Hammond is a *complete* organ with a full range of lovely organ tones. Since variety of tone color is the organ's principal appeal, the Hammond Organ assures the satisfaction only a complete organ can give. In addition to the familiar flutes, diapasons, reeds and strings, the Hammond Organ offers a profusion of instrumental voices. At will the player may select almost any shade of tone coloring he wishes through the harmonic drawbar system. This vast range of tones is built into every Hammond console and is a part of every Hammond installation without extra cost.

Never Has to be Tuned

Because its tones are generated electrically the Hammond Organ *can never go out of tune*. This not only means a very substantial saving in maintenance cost but is a wonderful convenience.

Great Dynamic Range

The ability to swell from a far-off murmur to a mighty surge of sound in a fraction of a second is one of the most famous features of the Hammond Organ—a new contribution to organ music. This dynamic control gives the organist a new eloquence, makes available marvelous new effects for religious services and concert organ music. The ability to play at a whisper also is important for the home, for practicing and playing at late hours.

Instant Response

The Hammond Organ responds instantly at the touch of a key—there is no lag. Fast-moving music, formerly often impractical for the organ, can be played without blur.

Easy to Play

The Hammond Organ is remarkably easy to play. Organists are delighted with its variety, responsiveness and expression. Pianists learn to play it almost immediately. Even the beginner in music finds the Hammond Organ a quicker way to make beautiful, satisfying music.

Fits in a Four-Foot Square

"A complete organ in a 4-foot square" is one of the great Hammond contributions. This has made organ music practical in many places where it was impossible before. This feature also saves valuable space and in many instances has saved thousands of dollars in church building costs.

Easily Installed

The Hammond Organ is ready to play wherever there is an electric outlet. It requires no structural installation or building alterations. This is one of its greatest economy features.

Easily Moved

Compact and light in weight, the Hammond Organ can be easily moved when desired.

Not Affected by Humidity or Temperature Changes

The Hammond Organ is always in tune and ready to play under any climatic conditions. And the exclusive use of non-corrosive metals and plastics in vital parts assures immediate, sure, long-lived performance in any climate.

Adaptability

The Hammond Organ provides *complete* organ music for every purpose. Tone quality and variety are not sacrificed for the smallest installation. The volume needed for large installations is simply a matter of adding tone cabinets.

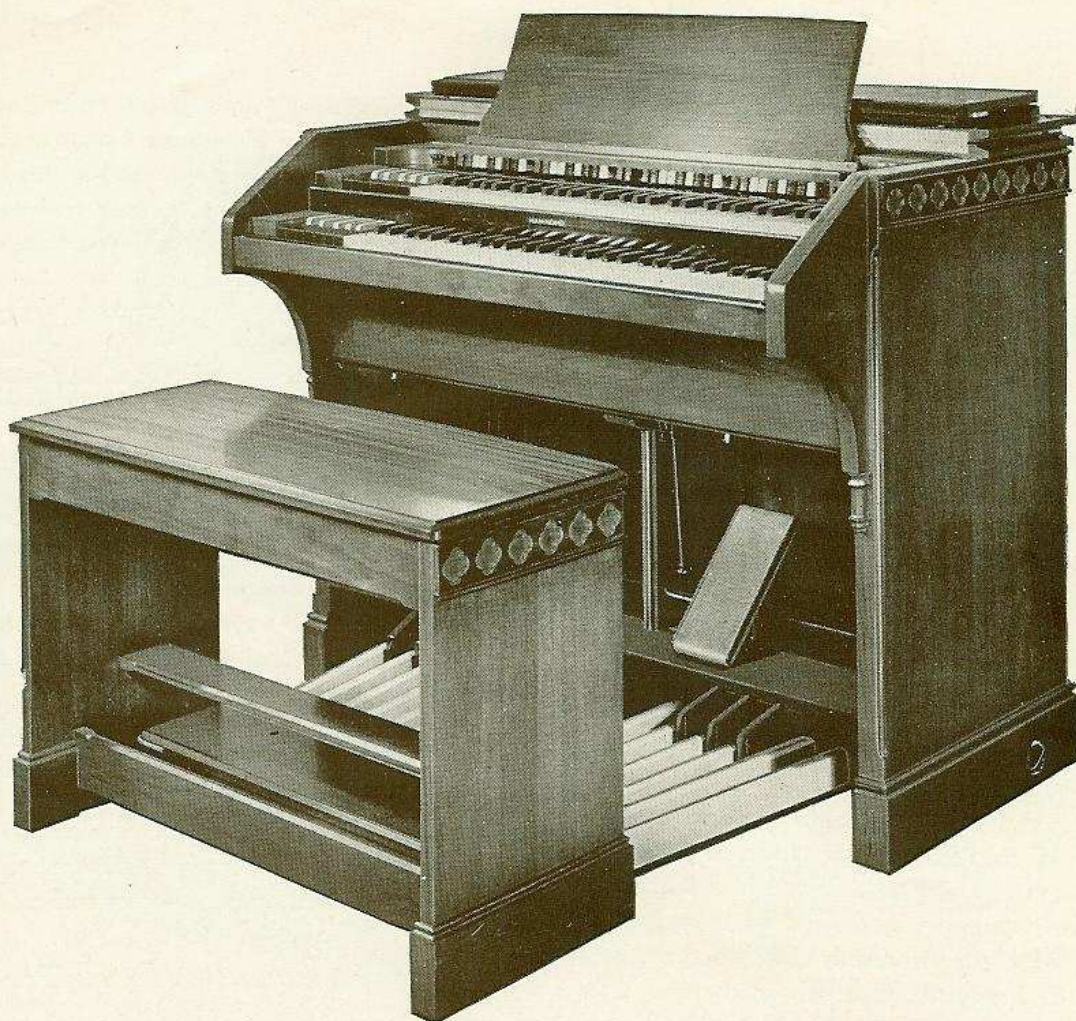
Negligible Operating and Maintenance Cost

The average installation uses about as much current as two 100-watt light bulbs—*only when it is played*. All maintenance costs average less than \$10 per year.

Sound Investment

Because it is the world's largest-selling organ, manufactured by volume production methods, the Hammond Organ costs far less and offers a greater dollar-value than any comparable instrument. Moreover, because of its long life and huge market, it maintains its value remarkably—depreciation is at a very low rate.

CHURCH MODEL HAMMOND ORGAN



The Church Model of the Hammond Organ provides a great variety of beautiful true church organ tones of outstanding beauty. So musically excellent is this organ that, since its introduction, more churches have bought Hammond Organs than all other comparable instruments combined. Easily played by either organist or pianist, nevertheless the Hammond Organ is a *complete* organ, with two manuals and pedal keyboard, and provides whatever volume is desirable for each church from the largest to the smallest.

The Church Model of the Hammond Organ is beautiful in design, its matched walnut panels decorated with quatrefoil carving harmonizing with church interiors. It is readily installed in any church without requiring structural changes, and can be easily moved when desired; all electrical connections are detachable at the console. The Hammond Organ never gets out of tune, and maintenance and operating costs are practically negligible.

SPECIFICATIONS

DIMENSIONS:	Closed, without pedal keyboard— $48\frac{3}{4}$ " wide, 29" deep, $38\frac{3}{4}$ " high; Open and with pedal keyboard and bench— $48\frac{3}{4}$ " wide, 47" deep, 46" high.	TONAL CONTROLS:	9 pre-set keys and 2 sets of 9 adjustable harmonic drawbars for each manual; 2 adjustable drawbars (16' and 8') for pedals.
WEIGHT:	Without bench or pedal keyboard—325 pounds.	EXPRESSION:	One expression pedal controlling Swell, Great and Pedals; also equipped with normal and soft volume control.
MANUALS:	Swell and Great, 61 keys each.	CHURCH MODEL C-2:	Equipped with Hammond Selective Vibrato providing three degrees of true vibrato and an "off" position on the upper manual and on the lower manual and pedals, together with Vibrato Chorus in the same number of degrees, selective in the same manner for manuals and pedals.
PEDAL KEYBOARD:	25-note, radiating, detachable, with pedal light.		

ORGAN MUSIC FOR EVERY PURPOSE

SINCE the invention of the Hammond Organ, organ music—called the most universally loved of all music—has become universally available. Wherever organ music is desired the Hammond Organ is an admirable and practical answer. Moreover, because of its compact design and other unique features, it has made organ music practical in many places where formerly it was impossible. The Hammond Organ is used in the mightiest cathedrals and the smallest homes and apartments. It is this exceptional utility of the Hammond Organ that has made superb, complete organ music available at such low cost.



A Complete Organ for Churches of Every Size

No church need be denied the glorious, reverent organ music which means so much to religious services. The Hammond Organ is practical for the smallest church or chapel and provides the necessary volume for the largest. Its vast resources of rich, majestic tones leave nothing to be desired for every part of every type of service. Its beauty always is appreciated and praised. Important, especially in chapels, is the Hammond Organ's unique ability to play as softly as a whisper. The budget-minded church also finds many economical and convenient features: low first cost, simple installation and portability, negligible maintenance and operating expense, no tuning, saving in space and often in church building costs, no acoustical problem. Since its introduction the Hammond Organ has been the world's largest selling church organ.

Ideal Music For the Home



Second only to its widespread use in churches, the Hammond Organ is most popular as a musical instrument for the home. It is a distinctive and distinguishing feature for any living room, but in thousands of homes and apartments it is found to go far beyond that—it takes an important part in the enjoyment and unity of family life. Because it is so remarkably easy to play, the Hammond Organ is ideal for the musical hobbyist. Its wealth of exquisite sustained tones makes the simplest music rich and beautiful—

the beginner usually finds he can make lovely, satisfying music on the Hammond Organ more quickly than on any other instrument. Add to this its unique ability to stay in tune, its compact size, easy portability and charming design and you have the ideal instrument for the home.

For Schools and Colleges



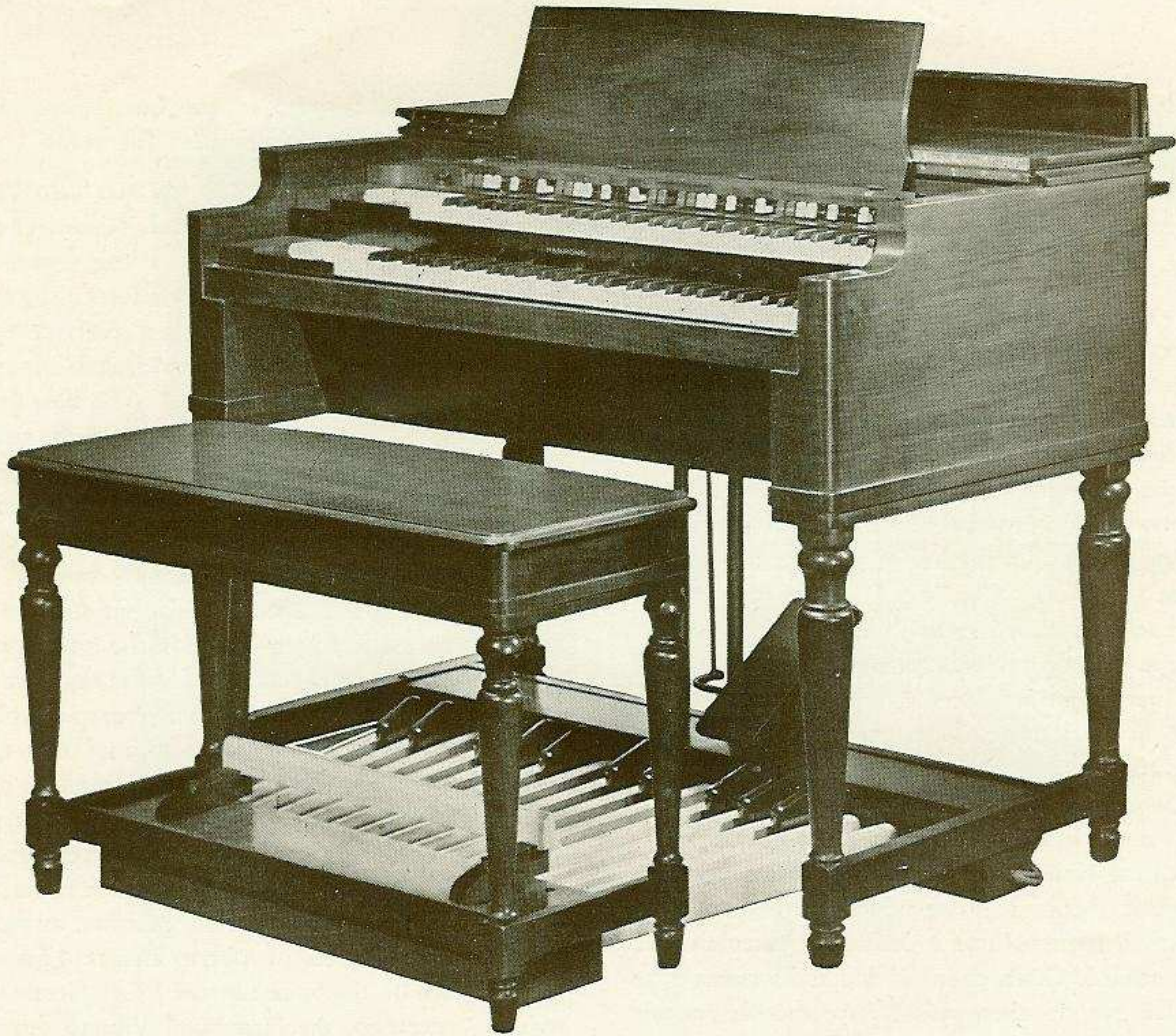
An organ always has been an important requirement for schools, colleges and universities. Now the Hammond Organ is within practical reach of every one. Second perhaps to a full orchestra, an organ provides the most satisfactory music for the auditorium. And in many other ways the Hammond Organ plays a leading role in school activities: for social functions, to accompany glee clubs and community sings, to augment the band and orchestra, for chapel services. Moreover, the Hammond Organ is an important curricular addition to the music department. Its widespread use has so increased the demand for organists that the opportunity to study the Hammond Organ is greatly appreciated by the students and their parents.

And in Countless Other Places

Wherever organ music is specified the Hammond Organ has won enthusiastic users. It is installed in some of the nation's largest public auditoriums, both indoor and outdoor. It is used by leading symphony orchestras. In radio and recording studios again it is virtually standard equipment. In the finest hotels and restaurants there is concert organ music for entertainment features and diners. It is used in department stores and banks. Music teachers, music schools and conservatories find it an important addition to their courses because of the increasing demand for Hammond Organ lessons. Hammond Organs are in hospitals, sanitariums and charitable homes. Individual professional musicians find it a profitable investment. It is used in fraternal lodges, theatres, motion picture studios, in army and navy chapels—it even goes to sea aboard U. S. naval units.

Since its introduction in 1935 the Hammond Organ has found its way into fifty-seven countries of the world. Its superb musical quality, plus utility, practical design and volume manufacturing methods all have combined to make fine organ music something, not just for the privileged few, but for every one.

HOME MODEL HAMMOND ORGAN



This is the most popular model of the Hammond Organ for the home, although the Church Model is at times selected for residential use to harmonize with certain styles of furniture. The Home Model Hammond Organ is built into a console of graceful spinet design that fits well into most decorative schemes. Occupying only a four-foot square of floor space, even very moderate-size living rooms can easily

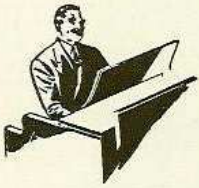
accommodate it.

The vast tonal resources of this model are the same as those of the Church Model, and therefore adequate for every type of organ music. In addition to home use, this model is very popular for auditoriums, schools and colleges, and for use with orchestra. Easily moved when desired; all electrical connections are detachable at the console.

SPECIFICATIONS

DIMENSIONS:	Closed, without pedal keyboard— $48\frac{3}{4}$ " wide, $28\frac{3}{4}$ " deep, $38\frac{3}{8}$ " high; open and with pedal keyboard— $48\frac{3}{8}$ " wide, 47" deep, 46" high.	TONAL CONTROLS:	9 pre-set keys and 2 sets of 9 adjustable harmonic drawbars for each manual; 2 adjustable drawbars (16' and 8') for pedals.
WEIGHT:	Without bench or pedal keyboard—310 pounds.	EXPRESSION:	One expression pedal controlling Swell, Great and Pedals; also equipped with normal and soft volume control.
MANUALS:	Swell and Great, 61 keys each.	HOME MODEL B-2:	Equipped with Hammond Selective Vibrato providing three degrees of true vibrato and an "off" position on the upper manual and on the lower manual and pedals, together with Vibrato Chorus in the same number of degrees, selective in the same manner for manuals and pedals.
PEDAL KEYBOARD:	25-note, radiating, detachable.		

ORGAN MUSIC FOR EVERY ENCLOSURE



The beautiful tones of the Hammond Organ originate in the console as tiny electric impulses, completely inaudible. These impulses are amplified and translated in the tone cabinet.

The volume of music produced is determined by the number and type of tone cabinets used. Generally speaking, a home or small chapel will require only a single 20-watt cabinet; a church or auditorium seating 500-600 people should have at least the equivalent of two 40-watt cabinets, while immense auditoriums or outdoor installations will use as many cabinets as needed to produce the desired volume.

The acoustics of a room also influence the number and type of tone cabinets required. An acoustically "dead" enclosure will need a greater power output than a "live" enclosure. Tone equipment for a church or auditorium must be adequate for the occasions when it is filled with people, as a large audience can absorb as much as fifty per cent of the sound.

With the Hammond Organ, there is no expensive guesswork. Additional tone cabinets can be added at any time if more volume is desired, or taken away if less is needed. Often churches and auditoriums have regular organ chambers, which have excellent acoustical properties. In such cases F-40 cabinets can be used advantageously. Best results always are obtained when tone cabinets are placed so that the sound does not carry directly to the listener but rather by reflection from the walls and ceilings.

Reverberation Control

Organ music sounds at its best in a "live" enclosure — one with smooth, hard walls and ceiling of stone or plaster, and with a minimum of carpeting, draperies and other sound absorbent materials. Such an enclosure imparts the reverberation or echo characteristic of the finest organ music in immense cathedrals. This is exactly opposite to acoustic requirements for speech. Interiors which are finished in panels of soft, sound-absorbent materials which minimize reflection of sound are excellent for the speaker but unfavorable for organ music. For such acoustically "dead" enclosures, however, the Hammond Reverberation Control makes it possible to add to the organ music the degree of reverberation desired. This ingenious device, one of the greatest contributions to fine organ music, is exclusive with the Hammond

Organ, and can be used in any installation where acoustical conditions are not ideal for music.

The Vibrato and the Vibrato Chorus

The new Hammond Vibrato and Vibrato Chorus adds a true vibrato to the music of the organ, and has been acclaimed as the greatest advance since the introduction of the Hammond Organ itself. As every musician knows, a vibrato is a very desirable musical effect with great emotional appeal. The new Hammond Vibrato should not be confused with the tremulant devices formerly used in an attempt to create vibrato effects. Tremulants produce their effect by varying the *intensity* of the sound through mechanical means. The Hammond Vibrato creates a true vibrato, which is a frequent, regular variation in the *pitch* of any musical note — that is, the pitch wavers first slightly sharp and then slightly flat at a fast rate of speed. The resultant vibrato is extremely pleasing and beyond doubt is the most important tonal addition ever made to the Hammond Organ.

The Hammond Vibrato and Vibrato Chorus provides this beautiful new vibrato in three instantly controllable degrees on most models of the Hammond Organ—1, 2 and 3 with an "off" position, as well as three different degrees of vibrato chorus. (Two degrees of each on the Spinet Model.) Completely electrical in operation, the Hammond Vibrato responds instantly and is absolutely "true" on every note. The Vibrato and Vibrato Chorus is exclusive with the Hammond Organ and is now built into all models. In addition, this feature may be added to earlier models of the Hammond Organ.

Chorus Control

On many of the Hammond Organs manufactured before the Vibrato and Vibrato Chorus were introduced, there is a Chorus Control. This device adds a multi-voiced effect that can be used in many ways.

The Ideal Installation

The proper standard Hammond equipment will produce superb organ music under every architectural and acoustical condition. It is not our intention here to give complete directions for selecting proper equipment. Hammond dealers have made thousands of installations and through their wide experience are outstanding experts in the organ field. Your Hammond dealer readily can specify the equipment needed and its proper installation for your particular purpose.

SPINET MODEL HAMMOND ORGAN



The Spinet Model (M) of the Hammond Organ is designed to fit into limited spaces, such as smaller houses and apartments, small churches and chapels and Sunday School rooms of larger churches. While it is not equipped with all the controls available on the larger models, it is completely adequate for the home or small church, with sufficient keyboard range for most music and plenty of volume for any moderate sized enclosure. The music you can produce

on the Spinet Model is of the same beautiful quality as that obtainable on the larger models.

The Spinet Model is self-contained, with the tone cabinet built into the console. It also has a special control that permits you to play very softly yet employ the entire range of the expression pedal. Furthermore, it has a new "automatic legato" pedal control that gives you an unbroken pedal effect, making the pedals much easier to play.

SPECIFICATIONS

DIMENSIONS: With music rack—45 $\frac{5}{8}$ " wide, 25 $\frac{3}{8}$ " deep, 42" high; without music rack, 34 $\frac{3}{4}$ " high. Depth with bench in normal playing position, 43".

WEIGHT: Console, 243 pounds; bench, 18 pounds.

MANUALS: Swell and Great (upper and lower) 44 keys each.

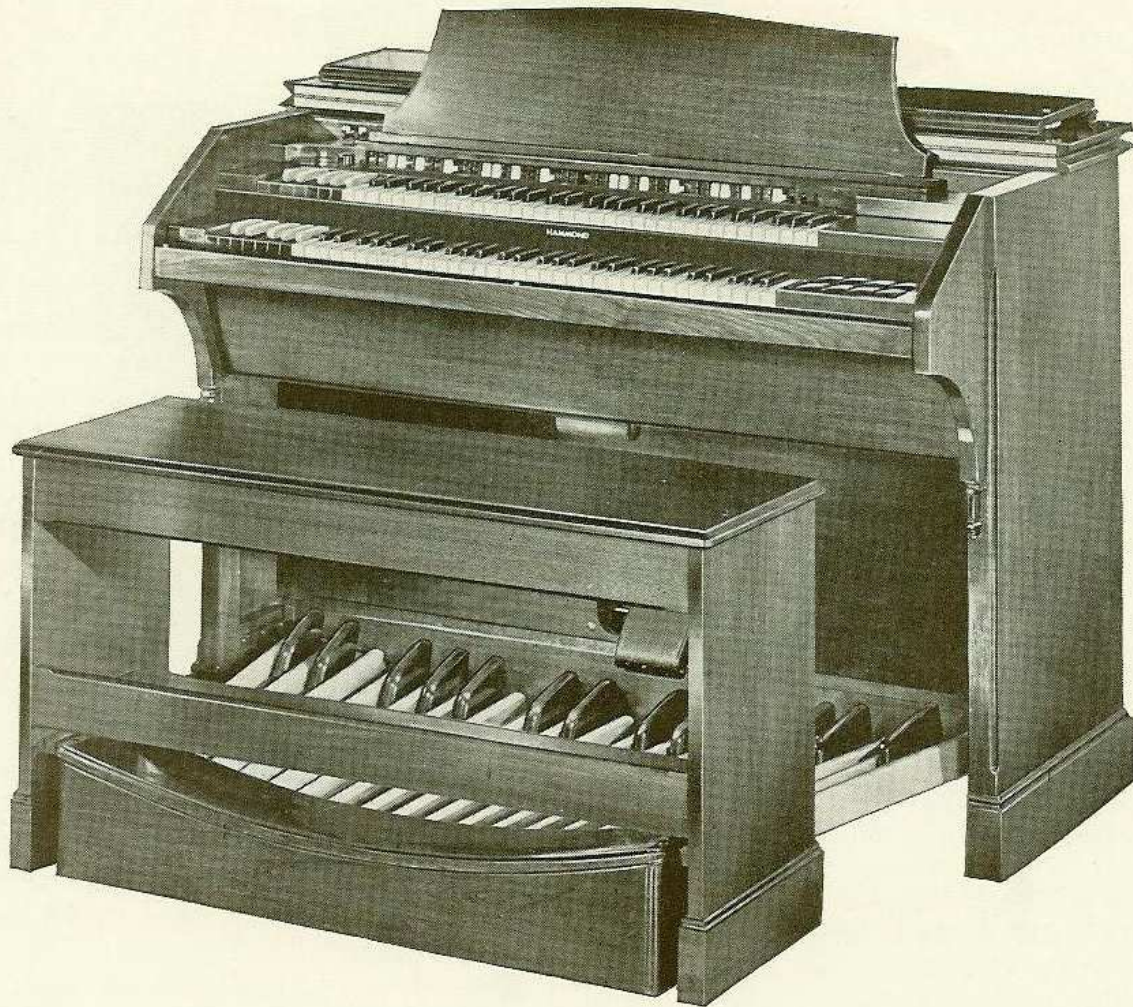
PEDAL KEYBOARD: 12-note.

EXPRESSION: One expression pedal controlling Swell, Great and Pedals; dynamic range, 28 decibels.

TONAL CONTROLS: 1 set of 9 adjustable harmonic drawbars for upper manual; 1 set of 8 adjustable harmonic drawbars for lower manual; 1 adjustable drawbar for pedals.

1 normal and soft volume control; 1 normal and slow pedal attack control; 1 normal and fast pedal decay control; 1 on and off Vibrato control; 1 Vibrato Chorus control; 1 normal and small "amount of Vibrato" control which also controls amount of Vibrato Chorus when the latter is used.

CONCERT MODEL HAMMOND ORGAN



Equipped to meet the most exacting requirements of the concert organist, the Concert Model Hammond Organ affords the utmost in tonal variety, beauty of tone, and console flexibility. The handsome walnut case is styled to harmonize with the interiors of fine churches and auditoriums. Although wider than the

Church Model and the Home Model, the Concert Model can nevertheless be carried through an ordinary doorway. Thus the organist can give recitals and concerts in any suitable place because the Concert Model can be readily moved.

SPECIFICATIONS

DIMENSIONS:

Closed, without pedal keyboard—57" wide, 40" high, 29" deep; open and with pedal keyboard—57" wide, 46 $\frac{7}{8}$ " high, 47 $\frac{5}{8}$ " deep.

WEIGHT:

Without bench or pedal keyboard—370 pounds.

MANUALS:

Swell and Great, 61 keys each.

PEDAL KEYBOARD:

32-note, concave, radiating, detachable, built to AGO specifications.

PEDAL SOLO SYSTEM:

Has pedal solo system with separate volume control, providing following solo effects: 32-foot Bourdon, 32-foot Bombarde, 16-foot Solo, 8-foot Solo, 4-foot Solo, 2-and-1-foot Solo, tunable

TONAL CONTROLS:

to preference by the organist. Also tablets for Mute Control, Pedal Solo On.

9 pre-set keys and 2 sets of 9 adjustable harmonic drawbars for each manual; for pedals, two adjustable drawbars (16' and 8').

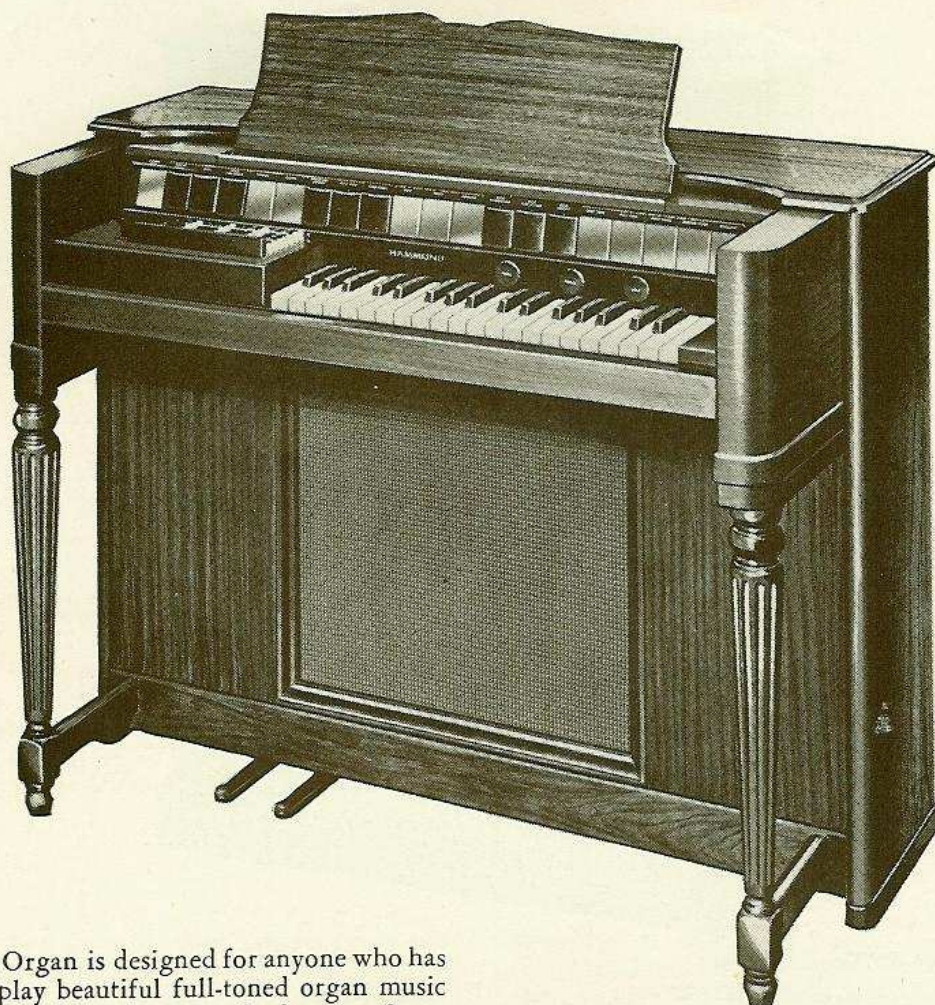
EXPRESSION:

One expression pedal, controlling Swell, Great and Pedals; also equipped with normal and soft volume control.

CONCERT MODEL RT-2:

Equipped with Hammond Selective Vibrato providing three degrees of true vibrato and an "off" position on the upper manual and on the lower manual and pedals, together with Vibrato Chorus in the same number of degrees, selective in the same manner for manuals and pedals.

HAMMOND CHORD ORGAN



The Chord Organ is designed for anyone who has the desire to play beautiful full-toned organ music but has not learned to play a standard organ. Some of these people can't read music. Others played a band instrument in school but never learned the piano. Others took a few piano lessons, can pick out a one-finger melody, but can't play chords. Any of these people can play the Chord Organ—quickly, without lessons.

Completely different from any other musical instrument in the world, the Chord Organ permits the untrained player to produce good musical results similar to the contrasting tones and bass accompaniment heretofore possible only on a two-manual and pedal organ. A standard three-octave keyboard is provided for playing the melody one note at a time or with chords. A "Chord Section", consisting of buttons to sound any one of ninety-six accompaniment chords, is conveniently placed to the left of the keyboard and is played with the left

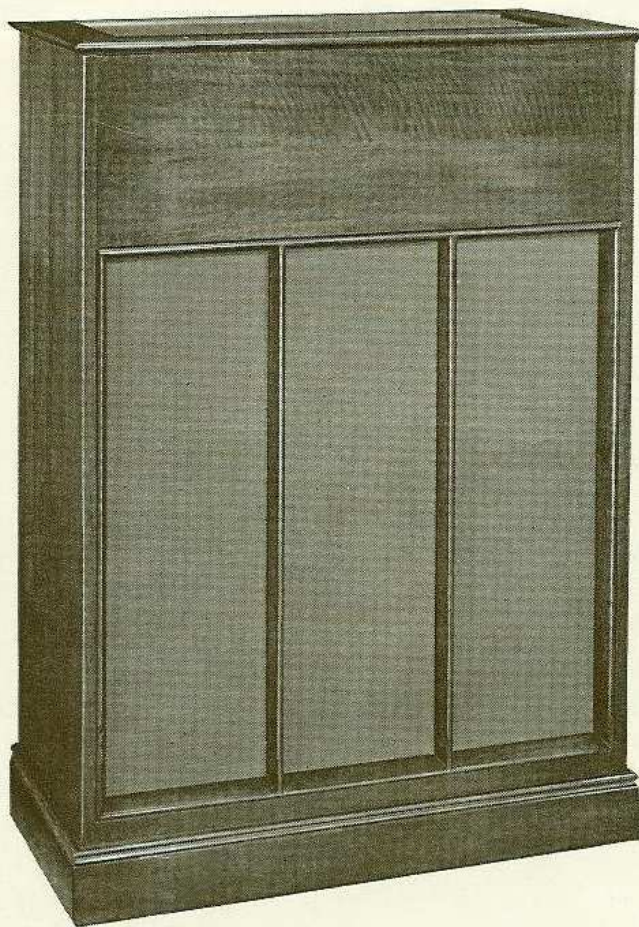
hand. Two foot pedals are provided to automatically select the proper pedal bass tone to accompany any chord played. The tonal generating system of the Chord Organ is similar to that of the pedal solo unit of the Concert Model, in that it employs vacuum tubes to produce musical tones.

The Chord Organ has a beautiful walnut case, is self-contained with speaker mounted inside the console. A comprehensive self-teaching playing instruction book and a generous assortment of music is supplied with each instrument. The music shows standard notation for persons who read music and a selection of easily understood new "Picture" music for those who cannot read standard music. Instruction material is also provided to assist the player in making an easy transition to playing the Chord Organ from standard sheet music.

SPECIFICATIONS

DIMENSIONS:	With music rack—43" wide, 21½" deep and 41" high. Without music rack—34½" high.	PEDALS:	Two pedals—one sounding the "root" note for any chord played and the other the "fifth".
WEIGHT:	156 pounds.	EXPRESSION:	An easy-to-use knee operated expression or volume control is provided. Three "balancers" control the relative loudness of the melody, chord, and pedal sections.
MANUAL:	One three-octave (37 note) standard keyboard that plays single notes or chords.	TONAL CONTROLS:	Twenty tilting tablets control a wide variety of tone colors and effects.
CHORD SECTION:	Individual buttons control 96 different standard organ chords.		

THE H SERIES TONE CABINETS



H-40 Tone Cabinet

DIMENSIONS: 33 $\frac{1}{8}$ " wide, 48 $\frac{1}{4}$ " high, 16 $\frac{7}{8}$ " deep.
WEIGHT: 147 lbs.

The H-40 is a generally useful tone cabinet for many different types of Hammond Organ installations. This tone cabinet was designed to produce good musical results in any acoustical environment. It is similar to the D series tone cabinets in that some tones are projected vertically toward the ceiling to provide maximum diffusion. It has 40 watts of power output like the F series tone cabinets and it is attractive in appearance.

The H-40 differs from all other Hammond tone cabinets in that treble and bass tones are sounded through separate loudspeaker systems. The treble tones are produced by two 12" dynamic speakers and are projected vertically through a top grille opening. The bass tones are produced by a bank of nine 10" dynamic speakers mounted on a vertical baffle and speaking through a large front grille. This arrangement of sound projectors produces efficient results over the entire frequency range of the organ. Bass tones are exceedingly full and round while treble tones are well diffused before they reach the listener.

This tone cabinet is at home in almost any enclosure—church, home, school, restaurant, or place of entertainment. It is neutral in furniture design and is made of walnut finished panels to match the Hammond Organ console. Like all other Hammond tone cabinets, the H-40 can be used singly or in groups of two or more.

HR-40 Tone Cabinet

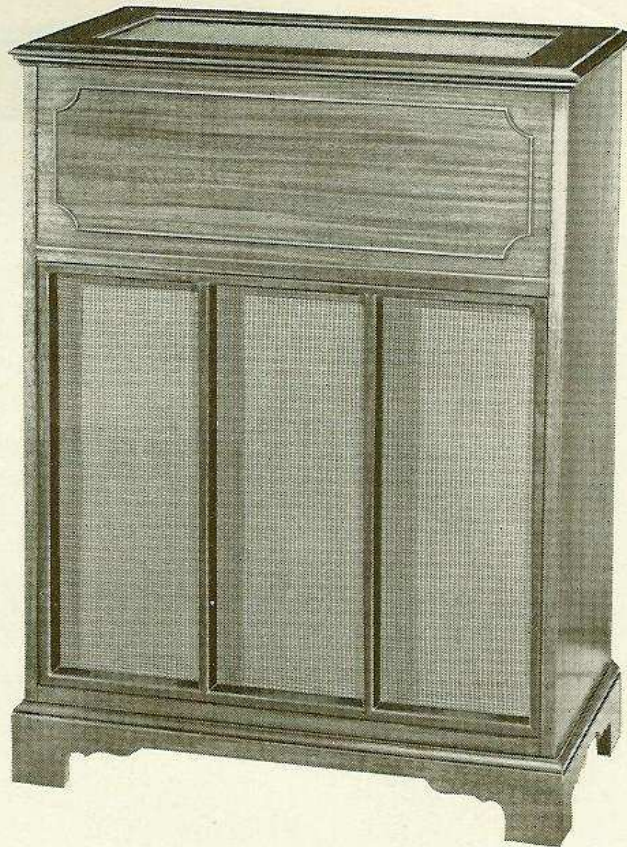
DIMENSIONS: 33 $\frac{1}{8}$ " wide, 48 $\frac{1}{4}$ " high, 16 $\frac{7}{8}$ " deep.
WEIGHT: 162 lbs.

The HR-40 is identical in appearance and construction with the H-40 but contains the exclusive Hammond Reverberation Control. This feature supplies electrically the reverberative effect otherwise achieved only by playing the organ in a large "live" enclosure. The amount of reverberation is adjustable over a wide range. No matter how acoustically "dead" the enclosure and regardless of its size, a Hammond Organ with Reverberation Control will provide the rich, full-toned music formerly possible only in the largest stone or brick enclosures.

This is the best Hammond tone cabinet for most installations. The HR-40 may be placed almost anywhere and good musical results will be obtained. The objectionable directional effect so often noticed when music is heard through a loudspeaker placed near the listener is absent. The sound energy from this tone cabinet is so well diffused that the music is heard with the same loudness in any part of the auditorium.

Medium-sized churches where there is no room for a tone chamber can be covered splendidly with an HR-40. Home users will also be pleased with the fine musical results obtained with this cabinet. Other users—hotels, restaurants, theaters, and public places of all kinds—find the HR-40 produces the full rich tones of beautiful organ music loved by everyone.

THE JR-20 TONE CABINET



The JR-20 Tone Cabinet

DIMENSIONS: 29 $\frac{3}{4}$ " wide, 15 $\frac{7}{8}$ " deep,
39 $\frac{3}{4}$ " high

WEIGHT: 120 lbs.

This is the most versatile tone cabinet made for use with Hammond Organ Consoles. It is beautiful in appearance and produces excellent tonal results.

The JR-20 Tone Cabinet is finished in handsome selected walnut panels and is designed to fit harmoniously with the finest of furnishings in homes and other decorative interiors. This cabinet is similar to the H Series Hammond Tone Cabinets in that treble and bass tones are sounded through separate loud speaker systems. The treble tones are produced by a twelve-inch dynamic speaker and are projected vertically through a top grille opening. The bass tones are produced by a bank of four ten-inch dynamic speakers mounted on a vertical baffle and speaking through the front grille. This arrangement of sound projectors produces efficient results over the entire frequency range of the organ. Bass tones are exceedingly full and round while treble tones are well diffused.

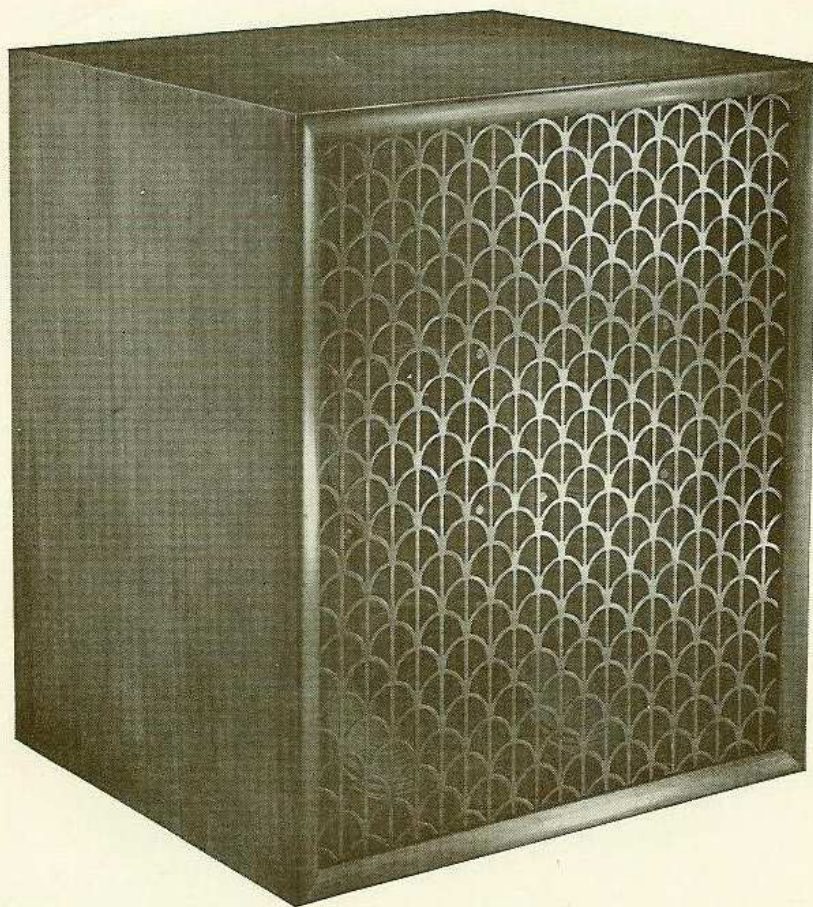
The JR-20 Cabinet, like all other Hammond Tone Cabinets, may be used singly or in groups to provide additional volume and wide distribution of sound. For example, if desired, a JR-20 may be used in the living room where it is an attractive piece of furniture, while a less decorative DR-20, or any other Hammond Tone Cabinet, may be placed in the game room or in some other part of the house. Such additional tone cabinets may be connected direct to the JR-20 to sound whenever the organ is

being played, or they may be connected through an echo switch so that either cabinet may be sounded independently of the other at the player's option.

The JR-20 Tone Cabinet contains the exclusive Hammond Reverberation Control. This device supplies electrically the reverberative effect otherwise achieved only by playing the organ in a large "live" enclosure.

The JR-20 is unique among Hammond Tone Cabinets in that the reverberative effect may be introduced into the treble tones, or the bass tones, or both optionally. This is an important feature, permitting the player to obtain exactly the degree of reverberation desired for the kind of music being played and for the particular acoustical environment in which the instrument is being used. This is accomplished by use of two Reverberation Selector Switches, one for "Treble" and the other for "Bass" tones. For example, if the JR-20 is installed in a home living room or in a radio broadcasting station where carpets, draperies, and other acoustic absorbent materials are found, the reverberation selector switch for the treble and for the bass would probably both be set in the "high" position. When the JR-20 is installed as one of several tone cabinets in a larger enclosure such as a church, school, or funeral home, the player will probably find that he wishes to have the treble tones reverberated but not the bass tones so he would set the treble selector switch in the "medium" or "high" position and the bass selector in the "low" or "off" position.

THE F SERIES TONE CABINETS



The F-40 Tone Cabinet

DIMENSIONS: 32-15/16" wide, 39-3/16" high, 28 3/8" deep.
WEIGHT: 190 lbs.

This is a utility tone cabinet for installations requiring considerable volume. It is stoutly built of heavy plywood finished with walnut stain and varnish. A metal grille is built into the front to protect the speaker cones from accidental damage.

Many of the largest and finest Hammond Organ installations have been made with these forty-watt tone cabinets. Each F-40 Tone Cabinet contains two twenty-watt power amplifiers and four 12" dynamic speakers. Thus, in power the F-40 is equal to two twenty-watt cabinets. Additional volume can be obtained by using two or more F-40's.

F-40 Tone Cabinets are usually placed high in the auditorium on a shelf or in organ chambers adjacent to the listening area. The F-40 Tone Cabinet should never be placed on the floor directly before the listeners because it is a directional type of tone cabinet and best musical results will not be obtained unless the sound energy it produces is enhanced by reflections against wall surfaces before it reaches the listener area.

A current Hammond Instrument Company price list is enclosed with this catalogue, or this list may be obtained from your Hammond Organ dealer. The prices thereon are F.O.B. Chicago and are uniform throughout the United States, except for slight variations due to varying freight and delivery charges. In some cases, especially in large installations, additional electric wiring or other construction may be necessary. The extra charges depend on amount of wiring or construction changes necessary for complete installation. Your dealer will gladly make recommendations for equipment and submit a complete price proposal without obligation. Detailed specifications are subject to change without notice and all consoles and tone cabinets are offered subject to the manufacturer's ability to supply them.

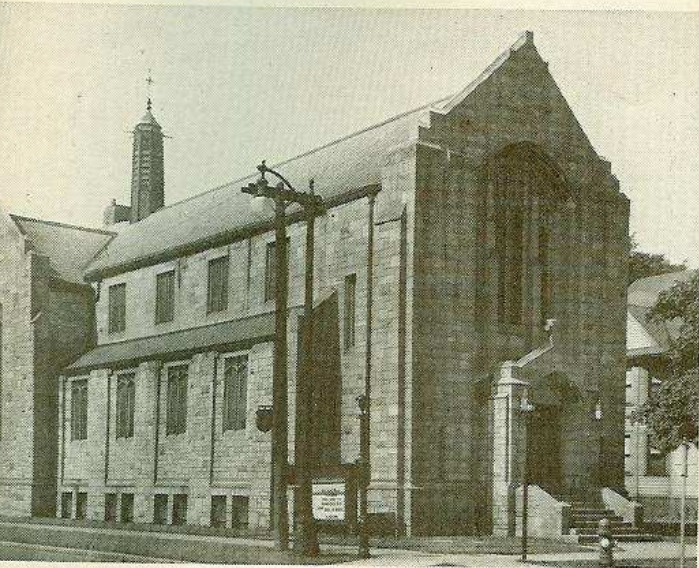
The FR-40 Tone Cabinet

DIMENSIONS: 32-15/16" wide, 39-3/16" high, 28 3/8" deep.
WEIGHT: 210 lbs.

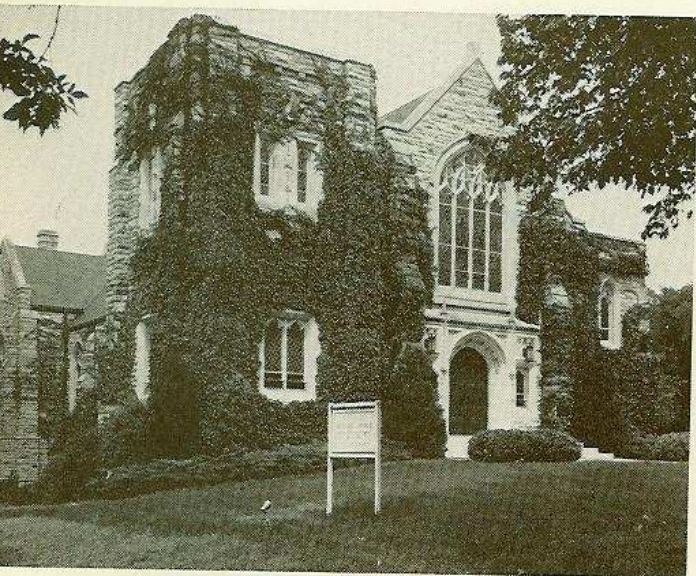
The FR-40 is identical in appearance and construction with the F-40 but contains the exclusive Hammond Reverberation Control. This feature supplies electrically the reverberative effect otherwise achieved only by playing the organ in a large "live" enclosure. The amount of reverberation is adjustable over a wide range. No matter how acoustically "dead" the enclosure and regardless of its size, a Hammond Organ with Reverberation Control will provide the rich, full-toned music formerly possible only in the largest stone or brick enclosures.

This tone cabinet produces excellent tonal results and should be used in large installations requiring more than the twenty watts of power produced by the DR-20 Tone Cabinet. When more than one forty-watt tone cabinet is required, additional units may be F-40 Cabinets because the reverberation control equipment in the FR-40 may be used to feed reverberated signals to as many extra cabinets as required.

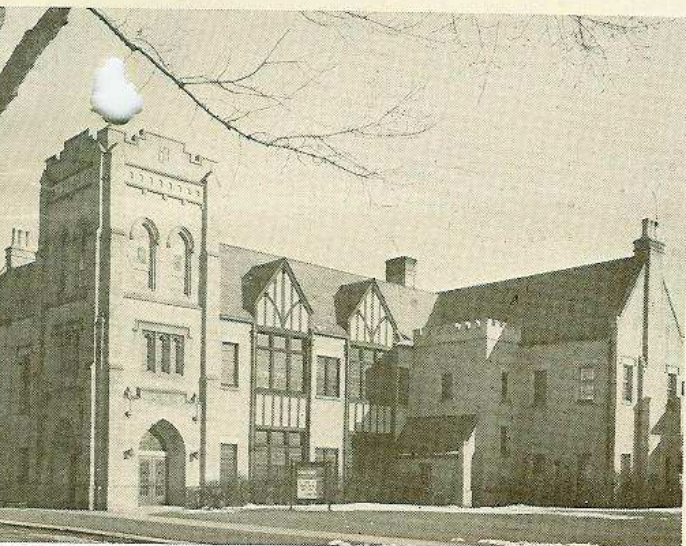
The Lutheran Church is highly liturgical and requires fine musical accompaniment. (Below) Christ Evangelical Lutheran Church, Detroit, Michigan, which installed its Hammond Organ in 1936, is one of the many fine churches of this denomination which enhance their services with the music of the Hammond Organ.



(Below) Central Methodist Church of Kansas City, Missouri, installed a Hammond Organ in 1939; the instrument has been used continuously year after year and has provided excellent music for all the church's needs, from the simplest service to the most impressive ceremony.



(Below) Fair Oaks Presbyterian Church in Oak Park, Illinois, has been served by the Hammond Organ since 1937, and like hundreds of other Presbyterian Churches, has found the music of this instrument a beautiful accompaniment to the traditional requirements of their worship services.



(Above) The Hammond Organ provides all music in the beautiful Cathedral of Mexico, largest church in the western hemisphere and third largest in the world. It also serves in the Cathedral of Labore in India, in St. Mary Major in Rome, and in thousands of other Catholic churches, large and small, throughout the world.



(Above) The large First Baptist Church of Little Rock, Arkansas, with a seating capacity of over 2000, has been beautifully served by the Hammond Organ for many years.

(Left) In North Woodbury, Conn., the North Woodbury Congregational Church depends on the Hammond Organ for music of beauty and richness—fitting accompaniment for its beautiful service of worship.

What great musicians say about the Hammond Organ —

"The Hammond Organ is a beautiful instrument and an absolute delight for anyone who loves music."

—Pierre Monteux, *Conductor*
San Francisco Symphony Orchestra

"Self-expression finds a new stimulus in the rich variety of sound combinations made possible by the incredible resources of this instrument."

Rudolph Ganz, *Concert Pianist*

"I wish to express my unbounded admiration for the Hammond Organ. To my ears it seems the finest organ ever built."

—Percy Grainger
Pianist, Composer, Conductor

"I have found the versatility and the tonal quality of the Hammond Organ most satisfactory for my personal use and for the use of the Indianapolis Symphony Orchestra."

—Dr. Fabien Sevitzky, *Conductor*
Indianapolis Symphony Orchestra

"It seems to me that the invention of the Hammond Organ belongs in the category of miracles, for it is hardly believable that this comparatively small instrument can produce not only every dynamic degree of sound, but also all the colors of the rainbow."

—Mischa Levitzki, *Pianist*

"Its flexibility and beauty of tone and range of color are inspiring."

—Tito Schipa, *Metropolitan Opera Star*

"I had never dreamed it might be possible for any instrument to have tone colors of such character and variety as to blend both acoustically and musically so perfectly with the timbre of the violin."

—Joseph Szigeti, *Violinist*

THE HAMMOND GUARANTEE

The Hammond Organ is guaranteed for a period of one year after date of delivery. Our liability under this guarantee is limited to replacing or repairing at our factory, or at any service station or dealer we may designate, any parts proving defective in workmanship or material during such period.

The vacuum tubes or speakers employed in this instrument are standard and are covered by the guarantee of their makers.

The guarantee does not extend to the woodwork, or to any damage caused to the organ or any of its parts because of abuse, accident or improper operation.

HAMMOND INSTRUMENT COMPANY
4200 West Diversey Avenue, Chicago 39, Ill.

